



GOOD MORNING
Have Good Trading Day

FRIDAY



Price is what you pay.
Value is what you get.

- Warren Buffet

MARKET PULSE

INDIAN INDICES

NAME	CMP	NET CH.	%
SENSEX	26878	+245	+0.92
NIFTY	8273	+83	+1.02

INDIAN ADR'S

SYMBOL	CLOSE	GAIN/ LOSS %
DRREDDY	46.70	+1.65
HDFCBANK	60.90	+2.89
ICICIBK	7.66	+2.82
INFY	15.02	-0.73
TATAMOTOR	36.60	+1.81
WIPRO	9.84	+0.72

FII AND MF ACTIVITY

SYMBOL	In Crs.
FIIs Eq (Provisional)	-86.88
FIIs Index Future	1673.60
FIIs Index Options	1541.44
FIIs Stock Future	347.57
FIIs Stock Options	-53.53
DIIs Eq (Provisional)	449.07

CURRENCY

RBI RATE	05-JAN-2017
RUPEE - \$	67.7884
EURO	71.5574
YEN 100	58.3300
GBP	83.7051

MARKET PULSE

GLOBAL INDICES

NAME	CMP	NET CH.	%
DOW	19899	-42	-0.21
NASDAQ	5487	+10	+0.20
NIKKEI	19445	-75	-0.39
HANG SENG	22568	+112	+0.50
SGX NIFTY	8314	+24	+0.30

WORLD COMMODITIES

FUTURE	US\$	CHANGES
CRUDE	53.74	-0.02
NATURAL GAS	3.296	+0.023
GOLD	1179.2	-2.1
SILVER	16.635	+0.002
COPPER	2.5410	+0.0035

WORLD EVENTS

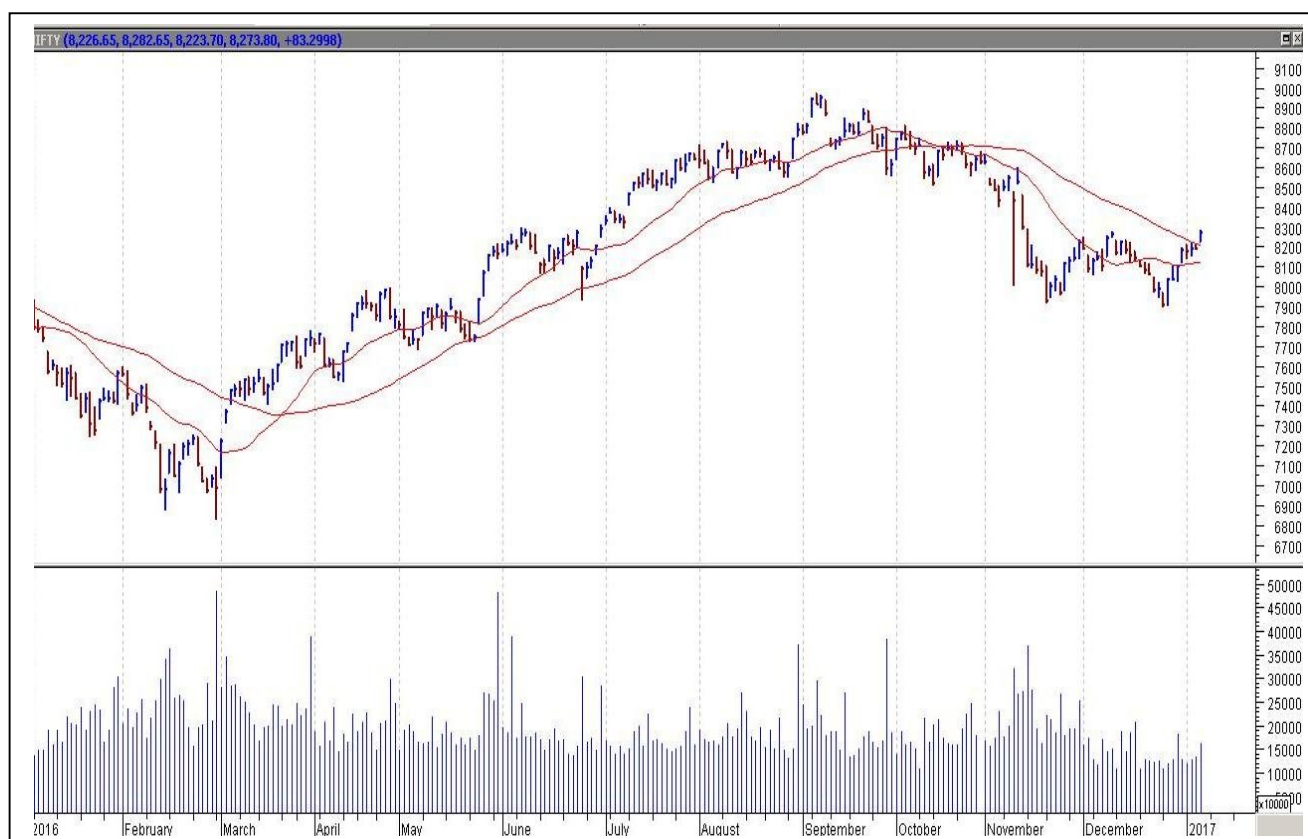
- US: Average Hourly Earnings m/m
- Non-Farm Employment Change
- Unemployment Rate
- UK: NIL

TOP STORY

- Wockhardt: Germany Regulator Gives Clean Chit To Ankaleshwar Unit, Gujarat.
- Piramal Ent: To Seek National Housing Bank Nod For Incorporating Housing Finance Co
- Sagar Cement December Production Down 5.6% At 1.52 Lakh Tonne Vs 1.61 Lakh Tonne (YoY)
- GE Power India gets contract worth \$29.22mn from NTPC
- Alstom Power Indo Borax to restart production activity from Pithampur plant from 6 Jan 2017
- GEE entered into agreement with Cliff Conwell for development of Private IT Park
- Tech Mahindra forms JV in Saudia Arabia
- Sanofi sues Glenmark, Torrent Pharma over sclerosis drug
- Mastek: US Unit Digility Acquires Digital Commerce Services Co, TAIS Tech
- Reliance Communications: Promoters Create Pledge On 4.41% Shares Of CO
- Hero group - IFC takes equity in Hero's energy arm for 125mn\$



NIFTY CHART



MARKET COMMENTARY

Indian equity benchmarks traded on a firm note throughout the day and ended in green. The street rallied and overlooked an inconclusive Goods and Services Tax (GST). The Council, comprising the Union finance minister, Union minister of state for revenue and representatives of states, would now meet on January 16, to resolve these tricky issues ahead of the Budget session, to start from January 31. The market would ultimately be driven by corporate earnings, with Tata Consultancy Services and Infosys scheduled to post their quarterly results on 12 January and 13 January, respectively. India is also gearing up to its annual budget, and investors hope Prime Minister Narendra Modi's government would keep spending under control and promote growth after its move to ban higher-value banknotes paralyzed large parts of the economy. For today's trade Nifty likely to trade in the range between 8295 – 8315 in the upper side and 8255 – 8235 in the lower side.

MARKET LEVELS

	CMP	SUPPORT LEVELS				RESISTANCE LEVELS			
NIFTY	8273	8255	8235	8215	8185	8295	8315	8335	8345
USDINR	68.11	68	67.9	67.8	67.7	68.2	68.3	68.4	68.5



BULK DEALS (BSE)

SCRIP	CLIENT NAME	BUY/SELL	QUANTITY	PRICE
BANARBEADS	VIRAF KAIKHUSHROO CHINYOY	S	111,766	63.86
CENTRUM	INDIVISION INDIA PARTNERS	S	2,200,000	28.03

BULK DEALS (NSE)

SCRIP	CLIENT NAME	BUY/SELL	QUANTITY	PRICE
BFUTILITIE	IFCI LTD.	SELL	245011	400.16
GLOBOFFS	INDIASTAR (MAURITIUS) LIMITED	SELL	154000	58.02
MBLINFRA	SKS FINCAP PVT. LTD	SELL	400000	34.55
MBLINFRA	VENUS INDIA ASSET- FINANCE PVT.LTD.	SELL	800000	34.82
RADICO	BNP PARIBAS ARBITRAGE	SELL	1266764	119.06

SCRIP'S IN F&O BAN

(To resume for normal trading below 80% of market wide limit required)

JUSTDIAL

Initial Public Offering (IPO)

Company Name	Security type	Issue Start Date	Issue End Date	Status
NIL				



NIFTY 50 STOCKS: SUPPORT & RESISTANCE

Symbol	Close	Support 1	Support 2	Pivot Point	Resistance1	Resistance2
ACC	1333	1322	1312	1331	1341	1350
ADANI PORTS	288	279	271	284	292	297
AMBUJACEM	214	212	209	213	216	217
ASIANPAINT	917	905	894	913	924	931
AUROPHARMA	686	672	658	680	695	703
AXISBANK	458	453	448	458	464	469
BAJAJ-AUTO	2723	2696	2668	2713	2741	2758
BANKBARODA	151	150	148	151	152	153
BHARTIARTL	321	313	305	318	326	331
BHEL	128	127	125	128	129	130
BOSCH LTD	20904	20543	20181	20771	21133	21361
BPCL	673	659	645	667	680	688
CIPLA	580	572	565	577	584	589
COALINDIA	308	306	304	309	311	314
DRREDDY	3136	3093	3050	3119	3162	3188
EICHERMOT	22324	22197	22069	22346	22474	22623
GAIL	442	439	436	442	445	449
GRASIM	866	857	848	869	878	890
HCLTECH	845	833	822	852	863	881
HDFC	1217	1208	1199	1214	1223	1230
HDFCBANK	1186	1181	1177	1188	1193	1199
HEROMOTOCO	3072	3029	2985	3056	3099	3127
HINDALCO	162	160	159	162	163	164
HINDUNILVR	833	825	817	830	839	844
ICICIBANK	257	253	250	256	260	262
IDEA	75	74	73	74	76	76
INDUSINDBK	1128	1111	1095	1120	1137	1146
INFRA TEL	350	345	339	349	355	359
INFY	996	987	977	998	1008	1019
ITC	247	245	242	246	248	250
KOTAKBANK	699	696	693	699	702	706
LT	1392	1382	1371	1388	1399	1405
LUPIN	1512	1493	1474	1506	1525	1537
M&M	1227	1212	1196	1223	1239	1251
MARUTI	5635	5557	5479	5603	5682	5728
NTPC	165	164	163	165	166	167
ONGC	200	197	193	198	202	203
POWERGRID	191	188	184	189	193	195
RELIANCE	1077	1071	1064	1075	1082	1087
SBIN	245	244	243	245	246	247
SUNPHARMA	643	641	638	644	647	651
TATAMOTORS	502	497	493	500	505	508
TATAMTRDVR	323	318	313	321	326	329
TATAPOWER	77	76	76	77	77	78
TATASTEEL	419	410	401	416	425	432
TCS	2334	2307	2279	2348	2376	2418
TECHM	488	480	473	494	501	515
ULTRACEMCO	3383	3325	3268	3362	3420	3456
WIPRO	480	476	472	481	485	490
YESBANK	1210	1179	1148	1199	1230	1250
ZEEL	471	462	453	468	477	483

NEWS & RUMOURS:

- Gold (Spot Dollar) major support = \$1150/\$1123 & Resistance = \$1206/\$1230.
- Crude oil range->\$47 to \$57.
- Dollar Rally Falsters as Treasuries Gain with Gold: Markets Wrap: - The dollar faced further headwinds as Chinese efforts to stem capital outflows and a rethinking of Federal Reserve rate intentions conspired to halt the strongest rally in the currency in more than a decade. Gold rose with Treasuries.
 - Dollar remains weaker as Fed minutes reveal uncertainty: - The U.S. dollar was lower against a basket of the other major currencies on Thursday after Federal Reserve minutes that pointed to uncertainty over the potential impact of the incoming Trump administration's policies on the economy. But the greenback came under pressure after Wednesday's minutes from the Fed's December 13-14 meeting showed that officials noted "[considerable uncertainty](#)" over the policy direction of President-elect Donald Trump's incoming administration.
 - U.S. natural gas slides to 6-week low after bearish storage data: - U.S. natural gas futures declined again on Thursday, falling to a near six-week low after data showed that natural gas supplies in storage in the U.S. fell less than expected last week. [Natural gas](#) for February delivery on the New York Mercantile Exchange hit a session low of \$3.175 per million British thermal units, a level not seen since November 28.
 - Oil prices pare gains after EIA inventory data: - Oil prices pared back gains on Thursday, as an unexpectedly large build in gasoline and distillates stockpiles offset a larger-than-forecast drawdown in U.S. crude inventories, according to a report released by the U.S. Energy Information Administration.

TRENDS & OUTLOOK – DATE: 06-Jan-2017

PRECIOUS METALS:

COMMDITY (MCX)	S2	S1	PIVOT POINT	R1	R2
GOLD (Feb)	27430	27630	27900	28275	28590
SILVER (Mar)	38500	39600	40500	41400	42786

BASE METALS

COMMDITY (MCX)	S2	S1	PIVOT POINT	R1	R2
COPPER (Feb)	367	374	382	389	394
ZINC (Jan)	170.10	173.20	177.25	181.80	184.50
LEAD (Jan)	132.10	135.25	139.45	143.80	148.30
NICKEL (Jan)	655	672	696	714	732

ENERGY

COMMDITY (MCX)	S2	S1	PIVOT POINT	R1	R2
CRUDE OIL (Jan)	3360	3470	3625	3755	3865
NATURAL GAS (Jan)	207	212	221	231	237

DATA TALKS : TODAY'S ECONOMIC DATA :

Average Hourly Earnings m/m, Non-Farm Employment Change, Unemployment Rate, Trade Balance, Factory Orders m/m, FOMC Member Evans Speaks.



LET THE
WOMAN
POWER RISE

**WOMEN
DESK**

All the Ladies in the house are
cordially invited to come
& explore their trading talents.

TOLL FREE: 18001030059



Registered Office

Indira House, 3rd Floor, 5 Topiwala Lane,
Opp. Lemington Road Police Station, Grant Road (East), Mumbai - 400007.

Corporate Office

'Ramavat House' E-15, Saket Nagar, Indore - 452018 (M.P.)

Customer Care

Tel: +91-731-4097170/ 71/ 72/ 73/ 74 M. +91 93031 72345

Email: customercare@indiratrade.com www.indiratrade.com



INSTITUTIONAL DEALING UNIT

Africa House, 5, Topiwalla Lane, Lamington Road, Mumbai, 400007

Tel: +91 22 30080678 Fax : +91 22 23870767 Email : ie@indiratrade.com

Disclaimer

This report is for private circulation within the Indira Group. This report is strictly confidential and for information of the selected recipient only and may not be altered in any way, transmitted to, copied or distributed, in part or in whole, to any other person or to the media or reproduced in any form. This report should not be construed as an offer or solicitation to buy or sell any securities or any interest in securities. It does not constitute a personal recommendation or take into account the particular investment objectives, financial situations, or any such factor. The information, opinions estimates and forecasts contained here have been obtained from, or are based upon, sources we believe to be reliable, but no representation of warranty, express or implied, is made by us to their accuracy or completeness. Opinions expressed are our current opinions as of the date appearing on this material only and are subject to change without notice.